



To Our Customers, Shareholders, Suppliers and Other Stakeholders



Our Products

We've been the most stable and dependable source for quality kaolin products for 75 years. You can rely on Thiele for your mineral solutions for decades to come.



Trusted, reliable, and dependable.



75 years ago, today, and for the future.



Please join the Thiele team in celebrating the 75th anniversary of our Company. In 1946, the combined vision of Bill and Paul Thiele, Gorton Vorland, Malcolm Burgess Sr., Dennard Miller, Robert Billue and Owen Etheridge, Sr. resulted in the formation of Thiele Kaolin Company. The Company began operations in 1947 and finished its first successful year by selling approximately 60,000 tons of kaolin products.

Over time, guided by excellent vision, outstanding leadership, the support and efforts of dedicated employees and community members, the Company has evolved into one of the world's leading sources of processed minerals. Thiele has achieved this status by developing tailored mineral solutions that provide significant value for our customers who participate in a variety of industries across the world.

While growing a successful business, Thiele has also focused on community and environmental stewardship. Thiele employees are avid supporters

of churches, civic and philanthropic organizations in the communities in which we operate – devoting their time, talents and resources to the advancement of the mission of these entities. As our Company leaders have been instrumental in protecting the environment, we follow the mantra of restoring our natural resources to a higher and better use, once our mining activities are completed.

As Thiele celebrates its rich heritage and successful past, we are laying the foundation for future decades of growth. Supported by committed shareholders, customers, employees and important business partners, we are confident in our vision and strategic plan for the future.

Thiele extends our gratitude to all of our stakeholders who have contributed to our first 75 years of success. We are excited by the future we will create together as we aspire to be the best diversified minerals supplier in the world.



PAPER & PACKAGING

Thiele is an industry leader in innovative products for paper and packaging. With calcined, hydrous, delaminated and blended options, Thiele offers a wide range of products tailored to meet your paper and packaging needs.

DEINKING

DEKA 2000 (for flotation deinking) combines the improved ink particle-collecting ability of modified kaolin with a deinking surfactant that is proven to give more efficient separation and removal of ink particles from recycled paper fibers.

SPECIALTY

In addition to options for traditional applications, Thiele offers specialty products that can be used in inkjet printing and concrete applications.

PAINTS & COATINGS

Thiele products are commonly used in interior and exterior solvent and water-based paints and coatings as a TiO₂ extender and functional filler. Our products can help improve scrub resistance, whiteness, brightness, rheology, gloss, and opacity.

ADHESIVES, CAULKS & SEALANTS

Thiele products are ideal, cost-effective functional fillers for adhesives, caulks, and sealants due to their particle size and platy structure.

PLASTICS

Thiele products offer benefits to many types of thermoset and thermoplastic applications. Our cost-effective products are used to improve visual appearance, strength, flexibility, electrical properties, and durability.

RUBBER

Thiele products can be used in a wide range of rubber applications to improve tensile, stiffness and abrasion resistance. Our products can also increase processing speed, particularly in extrusion applications.

THE CLAY COMPANY
FOR THE LONG HAUL



TIMELINE

Mining and Processing of Kaolin Begins (Paul F. Thiele is General Manager and Secretary; 60,000 Tons Processed)

1947

Reedy Creek Plant Completed; Air Float Begins

1970

Reedy Creek Hydrous Production Begins

1981

Swedish Subsidiary, Thiele Nordic was Established

1993

Limestone Opens

1995

2nd Calciner Installed

1998

Death of Paul F. Thiele (November 27)

2007

Industrial Product Capability Expanded

2016

Celebrating 75 Years of Excellence

2021

1954

1957

1967

1977

Reedy Creek Capacity Doubles

1990

1st Calciner Installed and New Main Office Opens

1994

Research & Development Center Opens

1997

Thiele of Wisconsin Facility Opened

2000

Reedy Creek to Sandersville Pipeline Operational

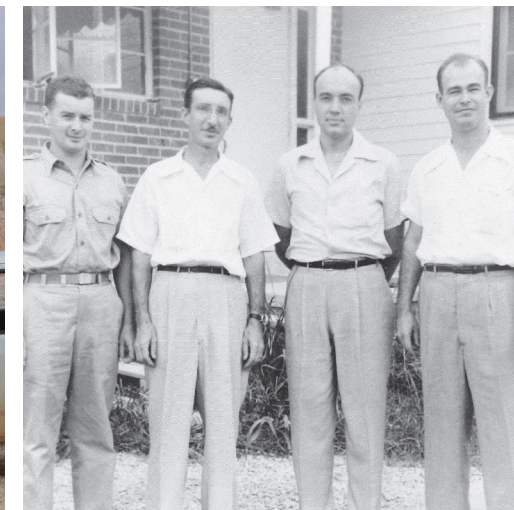
2014

Thiele Repurchases Stora Enso Oyj's Stock Interest

2017

Acquisition of Short Mountain Companies

Major Expansions at Sandersville Plant



Committed to delivering customer satisfaction, quality products, and reliable service, Thiele tailors every order to meet your needs. We approach every customer interaction with experience, common sense, and personal care. Above all, Thiele values promises given and kept, integrity, honesty and reliability, hard work combined with experience, and understanding gained over time. These beliefs define Thiele Kaolin Company.®

Learn more online at thielekaolin.com



SCAN ME

Thiele Kaolin Company®
P.O. Box 1056, 520 Kaolin Road
Sandersville, GA 31082 USA
Phone: +1 478-552-3951

Thiele
TAILORED MINERAL SOLUTIONS